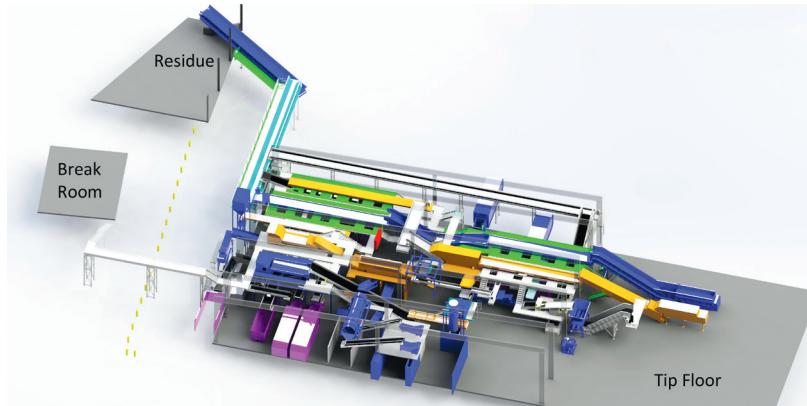


# Davis Street Resource Recovery Complex

## HIGH-DIVERSION CONSTRUCTION & DEMOLITION (C&D)/COMMERCIAL MATERIAL RECOVERY FACILITY (MRF) EXPANSION



In 2014, Waste Management of Alameda County, Inc. (WMAC) invested \$10 million to increase sorting capabilities and processing capacity to recover most “Readily Recyclable Materials,” with less than 10 percent of these materials in the residue. This high-diversion MRF is designed to meet CalRecycle’s CalGreen C&D and StopWaste’s commercial diversion goals for Alameda County. It is the only MRF in the region that meets both requirements. Recovered commodities are sent to markets and used in WM EarthCare™ landscape products.

**Expansion Cost** \$10 million

**Expansion Completed** April 2014

**Capacity** 1.6 million pounds (800 tons) a day

**Materials Accepted** Commercial Commingled (Dry Waste/Recycling)

- Fiber: ONP, MP, OCC
- Containers: Glass, Aluminum, Tin, Scrap Metal, Plastics 1–7, Rigid Plastics, Film

Construction & Demolition: Wood, OCC, Concrete, Metal, Dirt, Rock, Brick, Rigid Plastics

**MRF Technologies**

- Air Separators:** To separate small pieces of paper
- Magnets:** To recover ferrous metal
- Optical-Sorting:** To separate wood and aluminum
- Vacuum System:** To separate film plastics
- Vibratory Screen (Small Stones/Rocks):** To separate small stones/rocks, which will be reused for construction and avoiding use as ADC
- Vibratory Screen (Wood):** To separate out wood

**Accreditation** Recycling Certification Institute

**Contact** Erika Solis  
Davis Street Resource Recovery Complex  
2615 Davis Street, San Leandro, CA 94577  
510-563-4223  
Esolis3@wm.com



[www.davisstreet.wm.com](http://www.davisstreet.wm.com)

**THINK GREEN®**  
 Printed on post-consumer recycled paper.